

## Local Specialties and Souvenirs

### Hirosaki City



#### Apple pie

Everywhere around Hirosaki City, Japan's largest apple producer, you can enjoy apples using good-taste apples made in this "city of apple".



#### Tsugaru-Nuri lacquerware

Cypress is repeatedly painted with lacquer and polished in a lengthy 48-step procedure to yield this lacquerware, in a craft dating from the Edo period.



#### Kogin Embroidery

This craft from the Edo period features hemp cloth embroidered with cotton thread as reinforcement and extra warmth for the kimonos of farmers. It is characterized by simple, beautiful geometrical patterns hand-stitched on indigo-dyed hemp.



#### Apple juice

A hundred percent pure apple juice. By squeezing the apples without any contact with air, the true taste and scent of apples are maintained.

### Semboku City (Kakunodate)



#### Kabazaiku traditional tree-bark crafts

Making kabazaiku was initially a second source of income for samurai. Commonly made from the bark of the mountain cherry, these traditional crafts are known for their unique luster and unassumingly rich color.



#### Itayazaiku maple bark crafts

In Itayazaiku, the bark from young painted maple trees is cut into strips that are woven into baskets and other vessels. This elegant artisan craft is known for its simple wood texture.



#### Okaribayaki (game-flavored cooking)

Okaribayaki consists of meat and seasonal vegetables seasoned with Japanese pepper and miso. It recreates the flavors of the game meat so beloved by the northern branch of the Satake family who once controlled Kakunodate.



#### Naruto-mochi rice cakes

For generations, residents of the Kakunodate region have celebrated holidays and important events with these cakes. Made from stone-ground glutinous rice and filled with red bean paste, they are beloved for their chewy texture and the smooth sweetness of the filling.

### Kitakami City



#### Kitakami croquettes

Kitakami croquettes are made with local ingredients such as taro. Crunchy on the outside and soft and warm on the inside, these croquettes are simply to die for.



#### Cherry blossom dye

You may choose to purchase hand-made crafts colored with plant dyes from cherry blossom trees local to Kitakami. This natural color from the Michinoku-Kitakami region is truly a sight to behold.



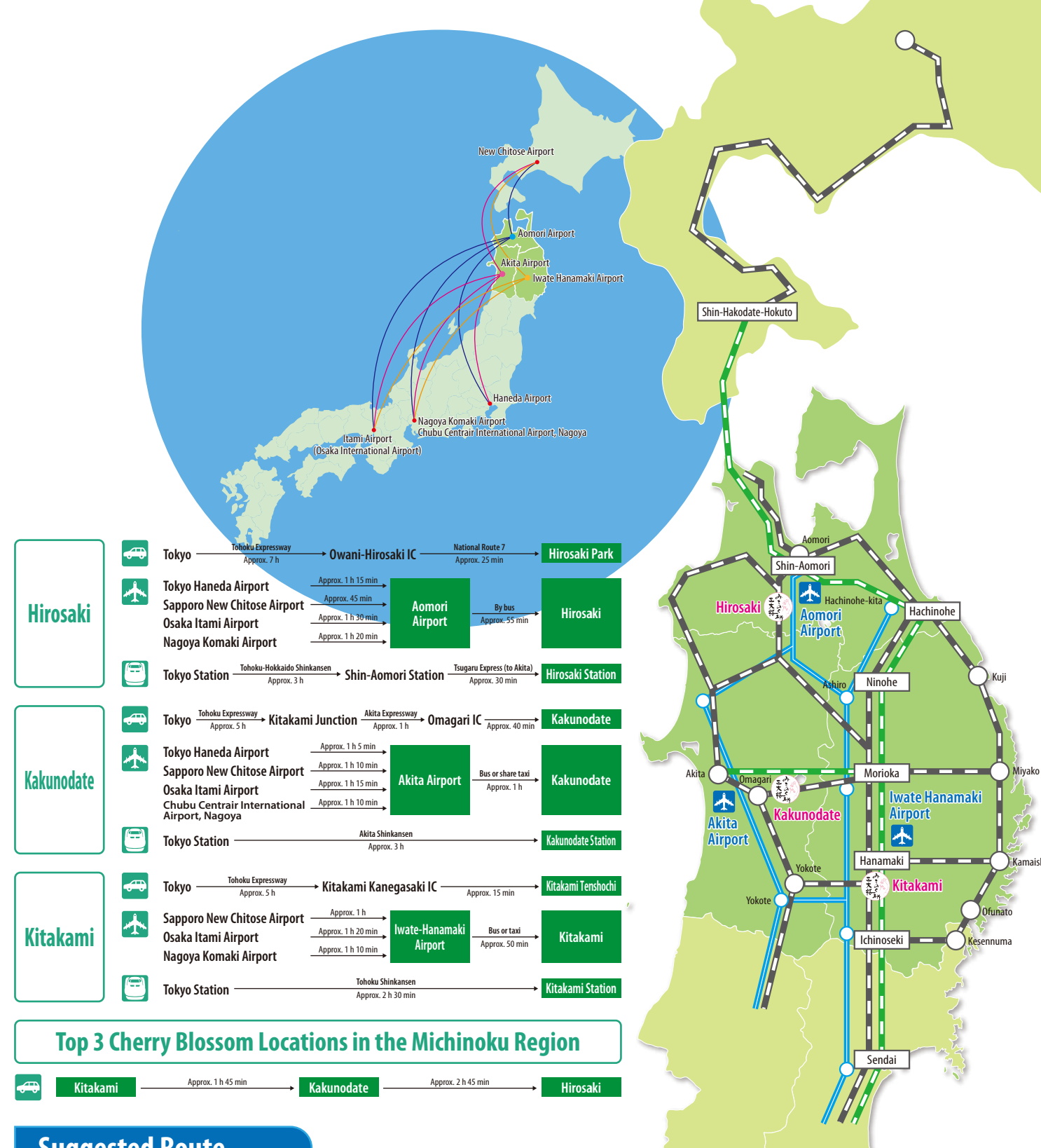
#### Kai-zogan Shell-inlaid Ebony Chopsticks

A zogan work shell-inlaid ebony. The shell patterned ebony shining white is beautiful. There are teacup holders and teapot stands in addition to chopsticks.



#### Kitakami beef

Kitakami is blessed with the perfect environment for raising livestock. Using advanced feeding techniques, the region's farmers work passionately to offer some of the best and most delicious beef in the country.



### Top 3 Cherry Blossom Locations in the Michinoku Region

|          |                    |            |                    |          |
|----------|--------------------|------------|--------------------|----------|
| Kitakami | Approx. 1 h 45 min | Kakunodate | Approx. 2 h 45 min | Hirosaki |
|----------|--------------------|------------|--------------------|----------|

### Suggested Route

|       |            |   |
|-------|------------|---|
| Day 1 | Hirosaki   | Hirosaki → Hirosaki Park (Hirosaki Castle) → Tsugaru-han Neputa Village Museum → Hirosaki Apple Park → Saisho-in Five-Storeyed Pagoda → Stay overnight in Hirosaki                      |
| Day 2 | Kakunodate | Kakunodate → Samurai District and Cherry Bark Traditional Craft Museum → Sake brewery tour and tasting → Japanese sweets factory tour → Kakunodate Onsen → Stay overnight in Kakunodate |
| Day 3 | Kitakami   | Kitakami → Tenshochi Park and Michinoku Folklore Village → Yakult factory tour → Kitakami Oni no Yakata Museum → Semi Onsen (Geto Kogen Onsen Village)                                  |

### Inquiries

Council for the Top 3 Cherry Blossom Locations in the Michinoku Region!

<https://michinokusakura.com>



弘前

HIROSAKI

角館

KAKUNODATE

北上

KITAKAMI







Aomori

Hirosaki

Hirosaki Park

When to visit:  
Late April  
to  
Early May

Hirosaki Park boasts 2600 cherry trees, and its annual Cherry Blossom Festival celebrated its 100<sup>th</sup> anniversary in 2018. The park offers a number of stunning sights, including flower carpet of cherry blossoms petals that at times covers the castle moat!



Akita

Kakunodate

Samurai District

When to visit:  
Late April  
to  
Early May

Rich in history and culture, the area around the Hinokinai River in Kakunodate seems frozen in time and is sometimes referred to as the Little Kyoto of Michinoku. Yoshino cherry trees border the river, while weeping cherry trees line streets of old samurai residences. Visit at the right time to see all of Kakunodate dyed in exquisite pink.



Iwate

Kitakami

Tenshochi Park

When to visit:  
Mid-to-late  
April

A stunning cherry tree tunnel extending 2 km along the Kitakami River. Enjoy the scenery above the water while walking under 300 carp streamers, as well as the lovely views looking down from Jingaoka.

Area sightseeing



**Hirosaki City Apple Park**  
Hirosaki is the center of apple production in Japan. Apple Park is located near Mt. Iwaki and if it is clear you can get a spectacular view of it. This park features 1,500 trees and 80 varieties of apples. You can learn about apple cultivation, marketing and nutrition as well as the history of apple production. Throughout the year there are various events to enjoy, and it has something to offer to every member of the family!



**Saishoin Temple Five-Storeyed Pagoda**  
This pagoda was built about 350 years ago by Nobuyoshi, the third lord of the Tsugaru clan, to commemorate those who died in battle, friends, and enemies alike, during the unification of Tsugaru. The five-storeyed pagoda, which stands 31.2 meters high, is considered the most beautiful of its kind in Tohoku.



**Fujita Memorial Garden**  
Fujita Kenichi, a native of Hirosaki and the first president of the Japan Chamber of Commerce and Industry, had the villa built in 1921. The garden, approximately 21,000m<sup>2</sup>, includes a garden on a hill, from which you can see Mt. Iwaki, and low-lying garden with beautiful pond and irises.



**Mt. Iwaki**  
Mt. Iwaki is a double volcano with an altitude of 1,625m. There are three peaks; the two flanking peaks are Mt. Ganki and Mt. Chokai, and the central peaks is Mt. Iwaki. The mountain greatly varies in appearance depending on where you look at it; each town claims that it has the best view of the mountain.



**Lake Tazawa**  
Boasting a depth of 423.4 m, the mysterious Lake Tazawa is Japan's deepest lake. The clear, bright blue of its waters offers a rich expression that will captivate all who visit its shores.



**Hirafuku Memorial Art Museum**  
This museum celebrates the works of local artists, such as Naotake Odano, Suian Hirafuku and Hyakusui Hirafuku among others. It also holds exhibitions of more contemporary artists.



**Dakigaeri Gorge**  
Dakigaeri Gorge is especially known for both its spring and autumn foliage, and offers paths for a pleasant walk to the gorge's landmark Mikaeri Falls.



**Nyuto Hot Spring Village**  
Nyuto Hot Spring Village is one of Japan's most popular remote hot spring destinations. It is home to seven unique hot spring inns that will surely bring peace and comfort to the weary traveler.



**Geto Kogen Ski Resort**  
The Geto Kogen Ski Resort is said to have some of the best snow in Japan, in both quantity and quality. Here you'll find plenty of courses to suit everyone from beginners to experts alike.



**Onikenbai**  
(Nationally Designated Important Intangible Cultural Property)  
This bold and dramatic dance is truly captivating. Visitors to Kitakami can see the sword dance being performed at the Kitakami Oni no Yakata, as well as throughout the city during the Kitakami-Michinoku Arts Festival, a three-day festival that opens annually on the first Friday of August.



**Geto Kogen Onsen Village**  
Located southwest of Kitakami City, Geto Kogen Hot Spring Village consists of eight facilities. The celebrated Geto Hot Spring is the most remote of these remote springs and boasts a history that dates back more than a millennium!



**Michinoku Folklore Village**  
Right next to Tenshochi, you'll find a grouping of about 200-year-old cottages. Immerse yourself in an authentic Japanese landscape which tells the history and evolution of Japanese village life.